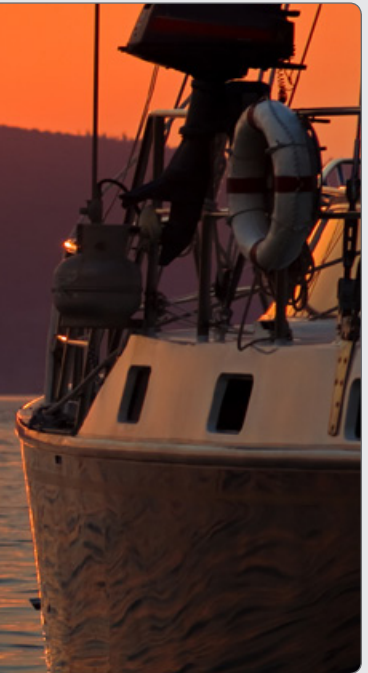
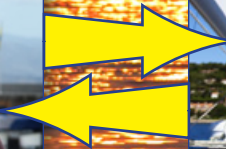
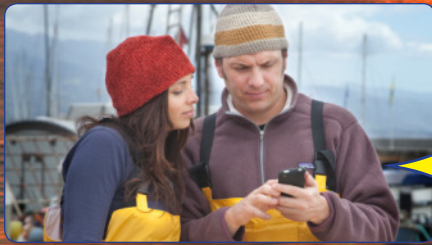


## Text Messaging with GPS!



ASE's exciting new text messaging solution lets you connect with friends, family and colleagues anywhere in the world with a simple and familiar text-based interface. **ASE SatChat** applies popular social networking and instant messaging features to Iridium's global communication network. And, to further enhance the power of **ASE SatChat**, you can even embed your current GPS coordinates into your message with the click of a button!

ASE SatChat is available as an integrated feature of the ASE ComCenter II family and model DK100 Docking Station for the Iridium 9555 handset.



### ASE SatChat with GPS Interface



ASE SatChat uses standard SMS messaging protocols to send and receive messages up to 160 characters in length. Messages can be sent between any Iridium-based equipment as well as most SMS compatible cell phones. Incoming and outgoing messages are color-coded to enhance readability.

#### The SatChat & GPS Interface

- A** Hardware Identification Info
- B** Network Status
- C** Message Entry Area
- D** Color Coded Chat History
- E** GPS Lat/Long
- F** Insert GPS button

\* Iridium data-rate charges apply



Data features like Internet usage and Text Messaging might incur additional service charges. Work with your Iridium Service Provider to determine the best plan for you.

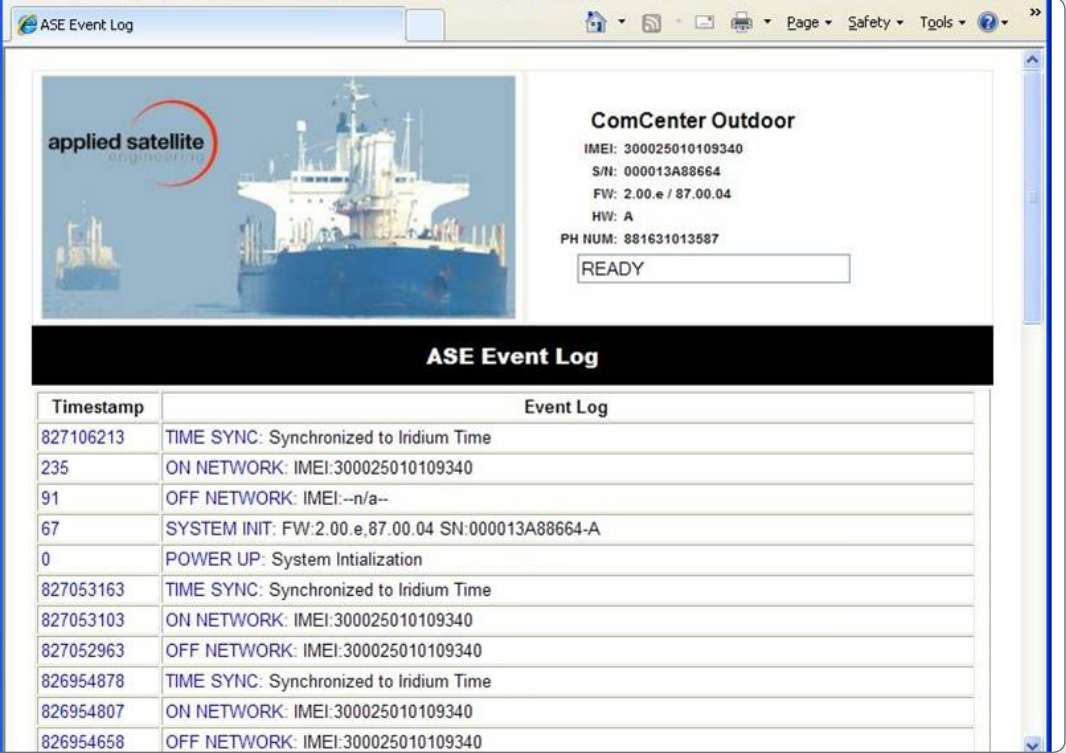


## ASE Event History Log



ASE products that support SatChat also contain powerful integrated diagnostic utilities.

The **ASE Event History Log** records and time-stamps system events to help you troubleshoot and optimize your system's performance.



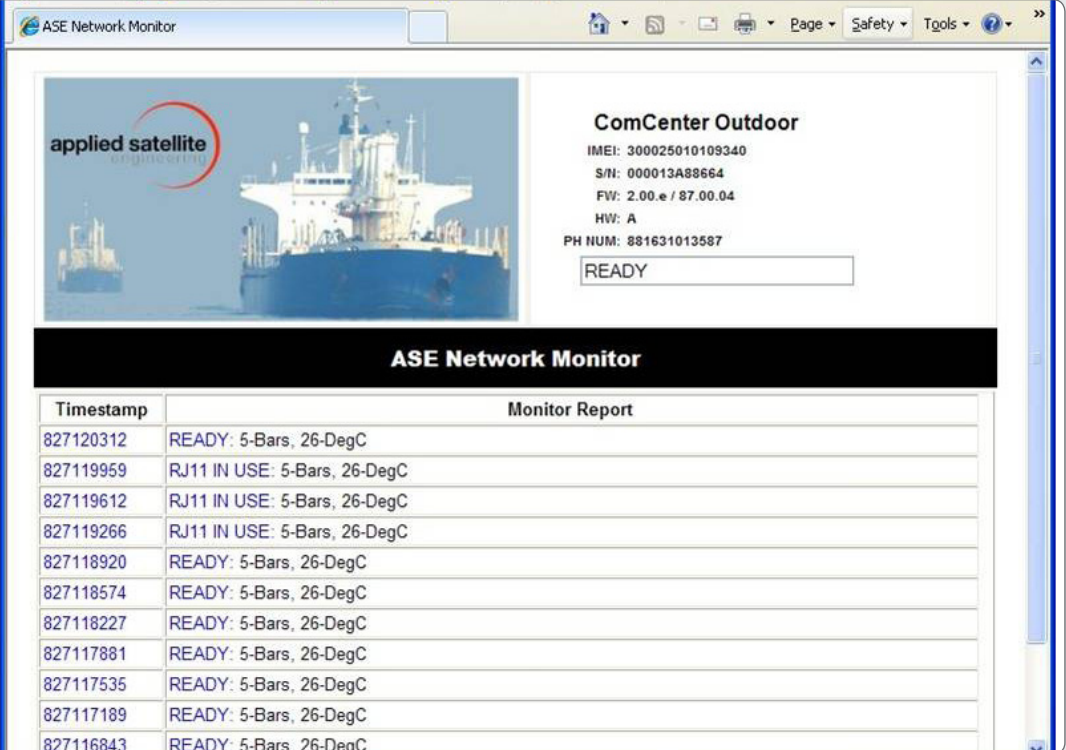
The screenshot shows the ASE Event Log interface. At the top, there's a header for 'ComCenter Outdoor' with technical details: IMEI: 300025010109340, S/N: 000013A88664, FW: 2.00.e / 87.00.04, HW: A, and PH NUM: 881631013587. Below this is a 'READY' status indicator. The main section is titled 'ASE Event Log' and contains a table of system events.

Timestamp	Event Log
827106213	TIME SYNC: Synchronized to Iridium Time
235	ON NETWORK: IMEI:300025010109340
91	OFF NETWORK: IMEI:--n/a--
67	SYSTEM INIT: FW:2.00.e,87.00.04 SN:000013A88664-A
0	POWER UP: System Intialization
827053163	TIME SYNC: Synchronized to Iridium Time
827053103	ON NETWORK: IMEI:300025010109340
827052963	OFF NETWORK: IMEI:300025010109340
826954878	TIME SYNC: Synchronized to Iridium Time
826954807	ON NETWORK: IMEI:300025010109340
826954658	OFF NETWORK: IMEI:300025010109340

## ASE Network Monitor and Diagnostics



The **ASE Network Monitor** is an excellent troubleshooting tool when installing and setting up your system by providing real-time status information.



The screenshot shows the ASE Network Monitor interface. Similar to the Event Log, it features a header for 'ComCenter Outdoor' with the same technical details and a 'READY' status. The main section is titled 'ASE Network Monitor' and contains a table of network status reports.

Timestamp	Monitor Report
827120312	READY: 5-Bars, 26-DegC
827119959	RJ11 IN USE: 5-Bars, 26-DegC
827119612	RJ11 IN USE: 5-Bars, 26-DegC
827119266	RJ11 IN USE: 5-Bars, 26-DegC
827118920	READY: 5-Bars, 26-DegC
827118574	READY: 5-Bars, 26-DegC
827118227	READY: 5-Bars, 26-DegC
827117881	READY: 5-Bars, 26-DegC
827117535	READY: 5-Bars, 26-DegC
827117189	READY: 5-Bars, 26-DegC
827116843	READY: 5-Bars, 26-DegC